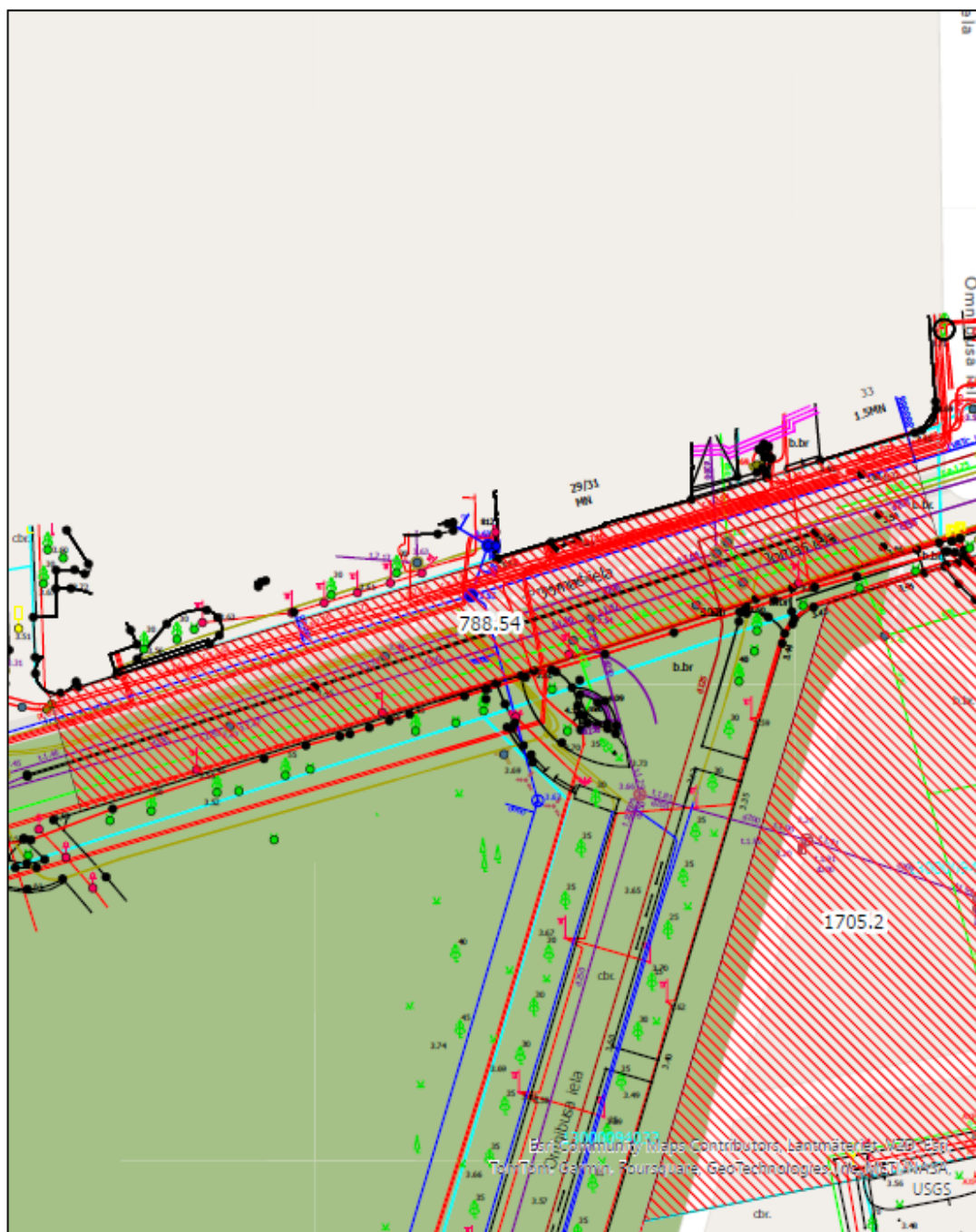


1.pielikums Jūrmalas domes
2024. gada 19. decembra lēmumam Nr. 618
(protokols Nr. 17, 5. punkts)

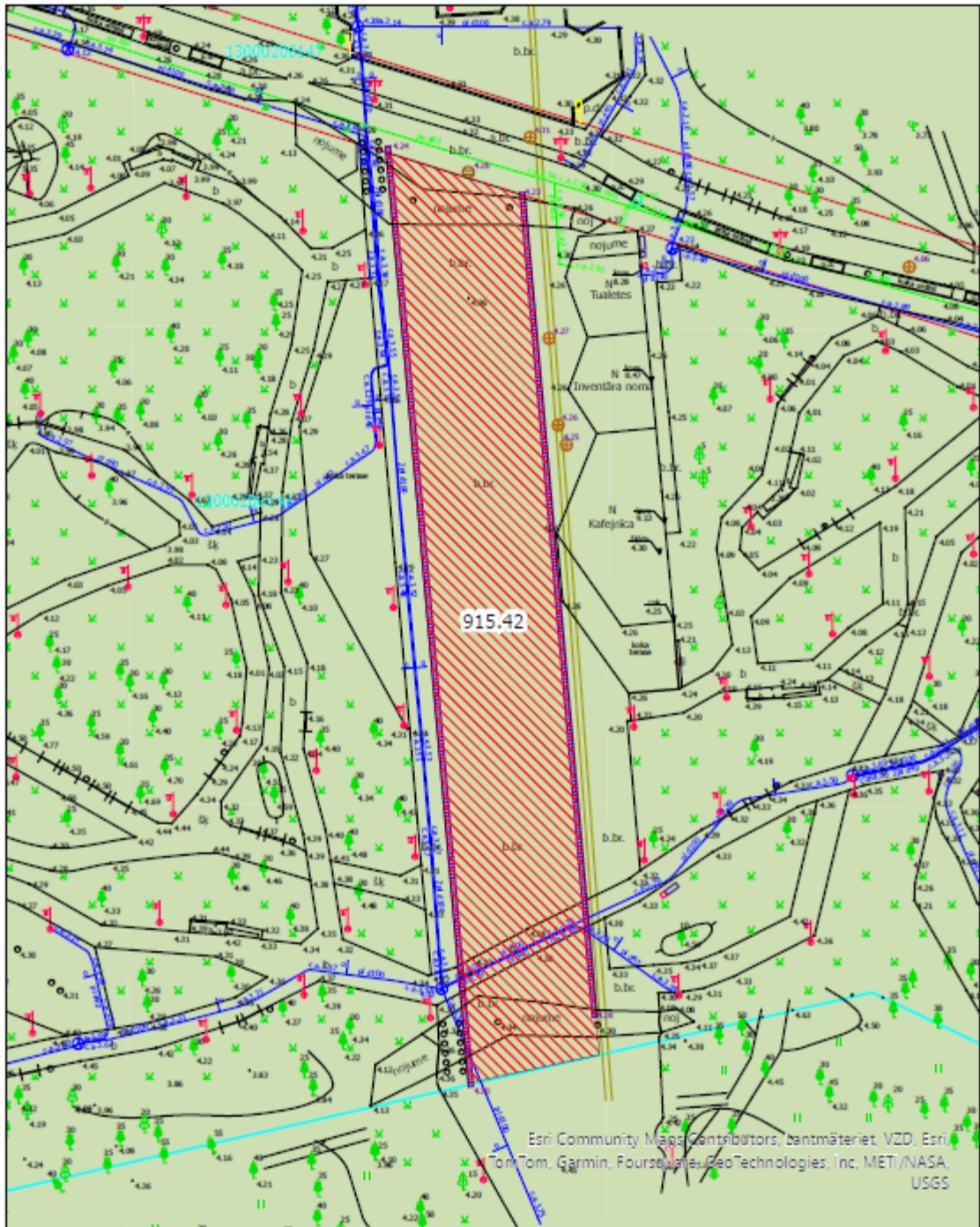
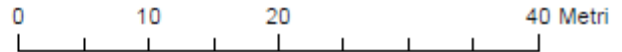
Mērogs: 1:500

Shape_Length	Platība M2	Adrese
176,758433	788,54	Jomas iela, kadastra Nr. 13000092324

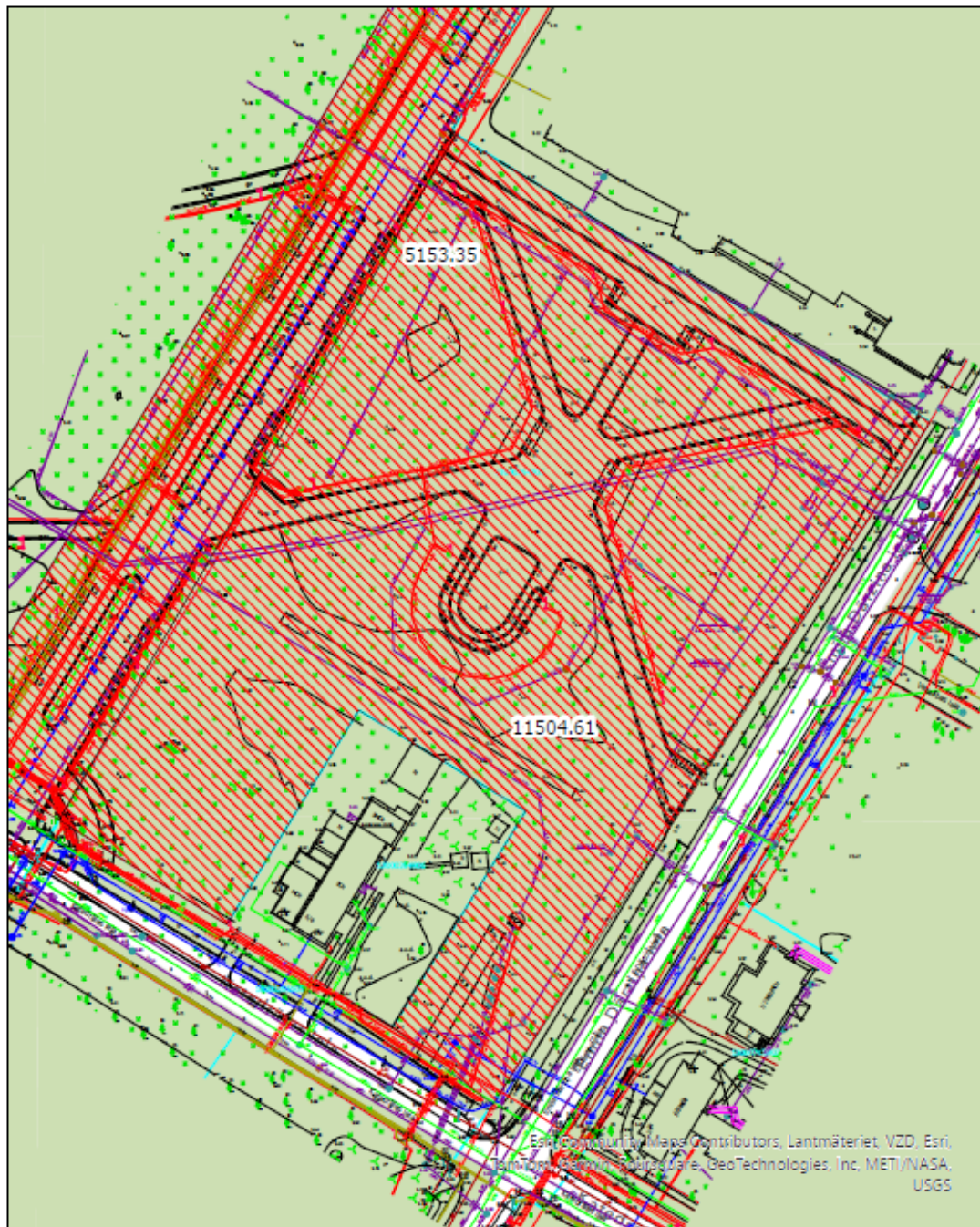
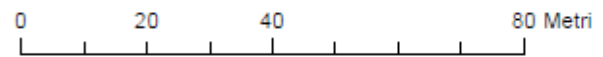
0 10 20 40 Metri



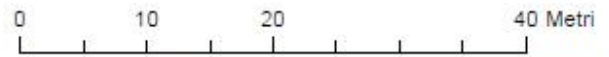
Shape_Length	Platība M2	Adrese
181,284503	915,42	Kauguru parks, Mazā Nometņu iela 3, kadastra Nr. 13000200148



Shape_Length	Platība M2	Adrese
555,203608	11504,61	Ķemeru kūrorta parks, Emīla Dārziņa iela 15A, kadastra Nr. 13000264905

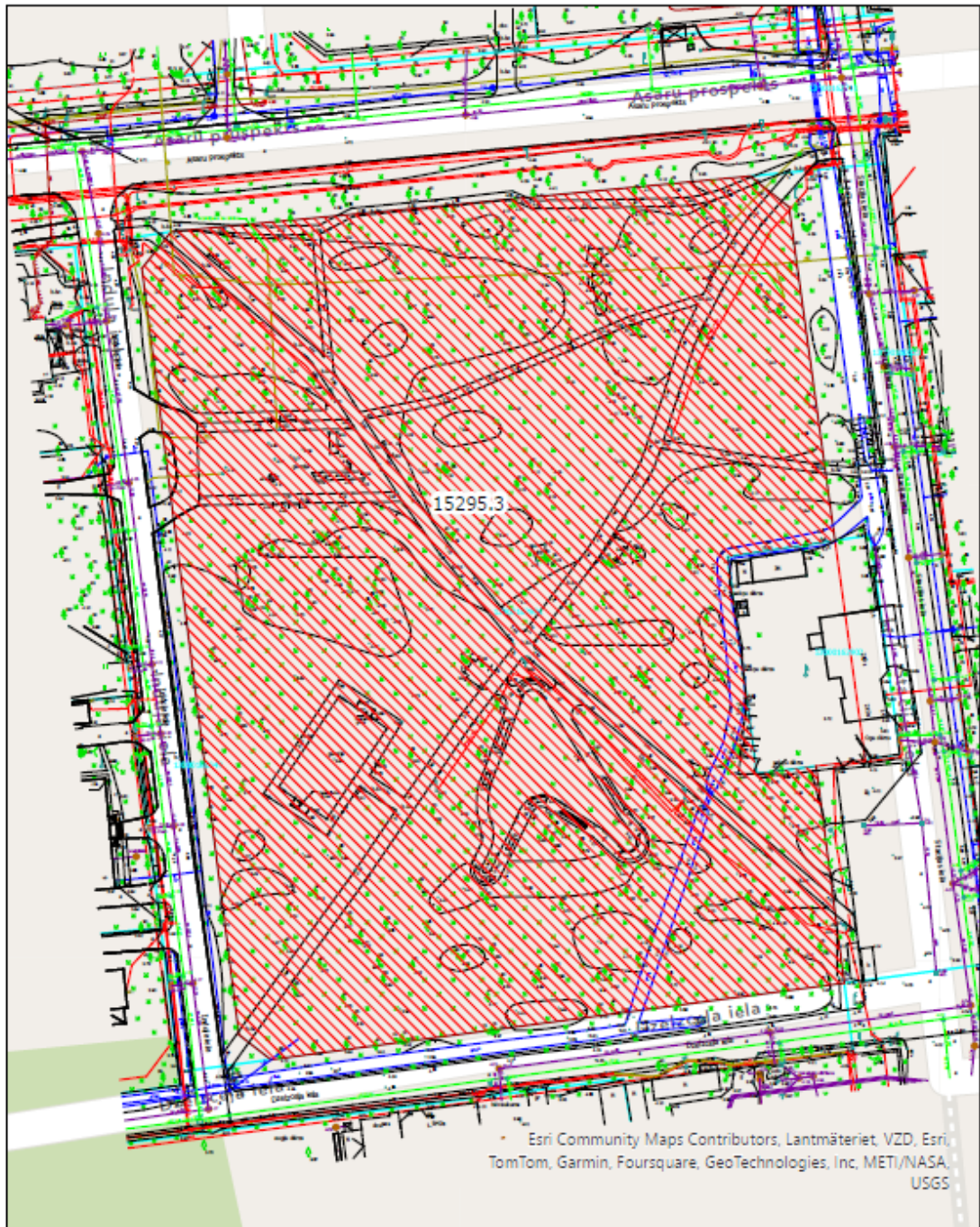
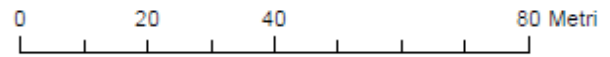


Shape_Length	Platība M2	Adrese
176,115331	1705,2	Majoru autostāvvietā, Jomas iela 32/34, kadastra Nr. 13000094001



Esri Community Maps Contributors, Lantmāteriet, VZD, Esri, TomTom, Garmin, Foursquare, GeoTechnologies, Inc, METI/NASA, USGS

Shape_Length	Platība M2	Adrese
526,09202	15295,3	Asaru parks, Asaru prospekts 16/18, kadastra Nr. 13000162901



Shape_Length	Platība M2	Adrese
284,073723	2454,81	Dzintaru Mežaparka autostāvieta

